



Tropical Storm Ana

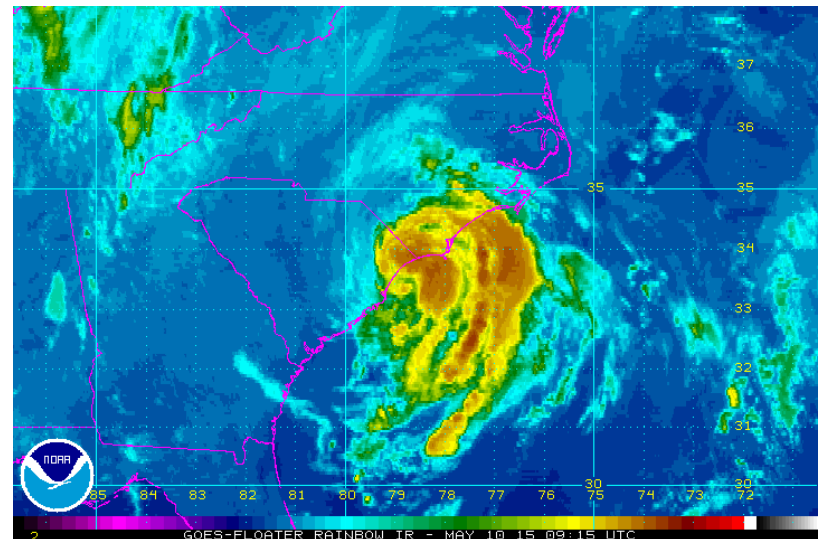
Threat Assessment for Eastern North Carolina

Created **6:00 AM Sun May 10, 2015**

John Cole

Warning Coordination Meteorologist

John.cole@noaa.gov



Latest Information

- ❑ **Tropical Storm Warnings** are still in effect for Carteret and Onslow Counties and the coastal waters south of Cape Lookout.
- ❑ Tropical Storm Ana is weakening, moving slowly to the NNW, and nearing landfall early this morning.
- ❑ A turn toward the north is expected to occur later today, followed by a turn toward the northeast with a gradual increase in forward speed on Monday. On the forecast track, the center of Ana should move onshore in the Myrtle Beach, South Carolina area by 7 am.
- ❑ TS Ana will weaken rapidly after the center crosses the coast this morning.

Storm Position/Information



Advisory Time:

5 AM EDT 10 May 2015

Position:

33.8 North 78.7 West, 15 miles
ENE of Myrtle Beach.

Intensity:

Sustained winds are **45 mph**

Movement:

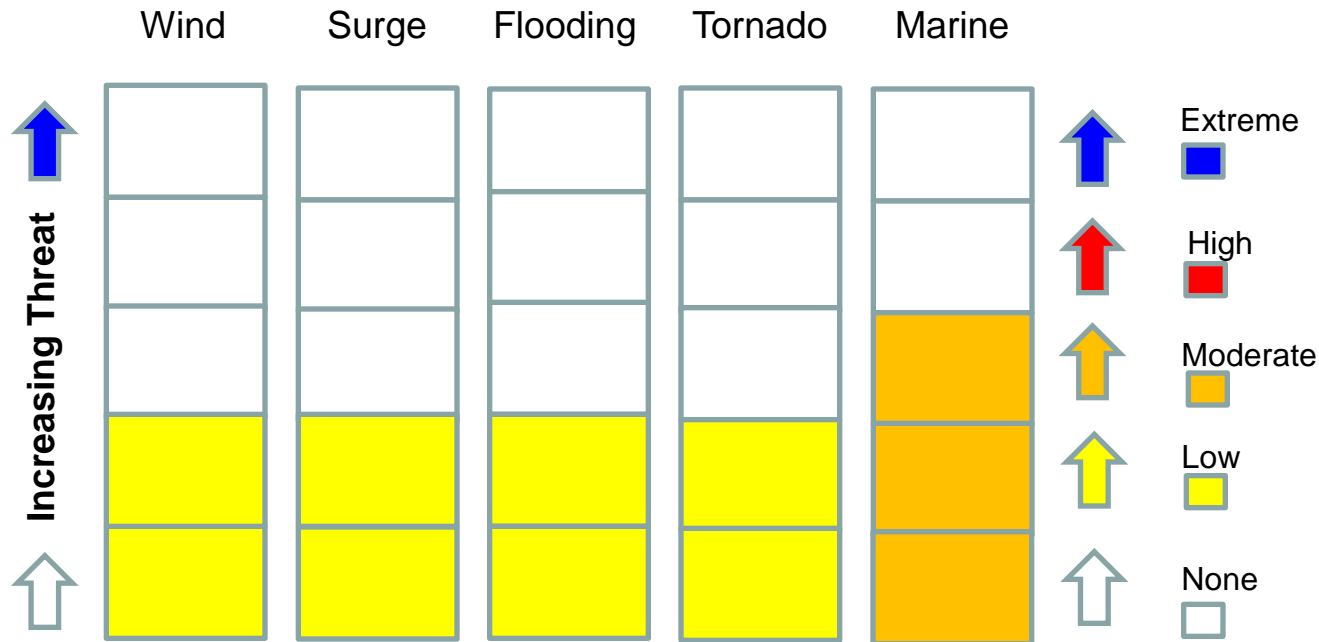
NNW at 5 mph

Minimum Pressure:

1002 MB or 29.59 inches

Expected Threats/Impacts Matrix – NO CHANGES

Hazards Specific to Eastern NC

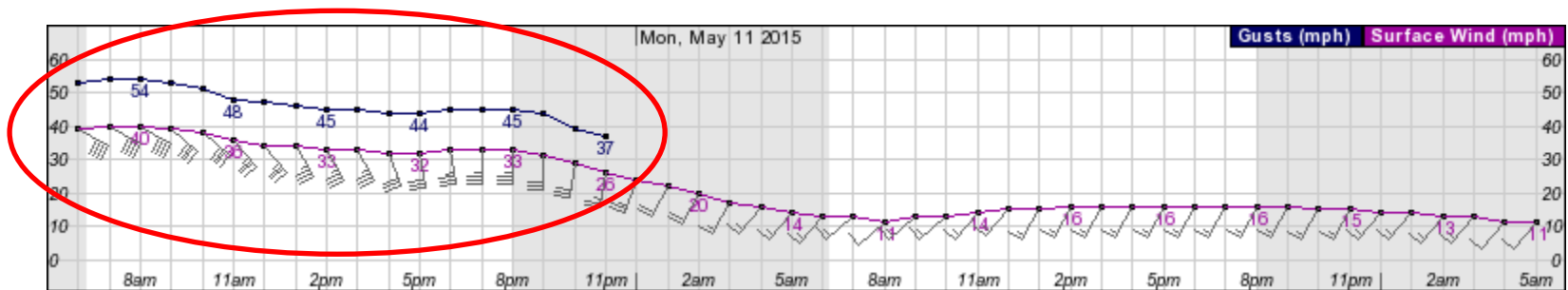


The primary impacts are still forecast to be marine, and minor flooding from rainfall. Other impacts are expected to be low, but minor surge, an isolated tornado, and gusty winds are all possible.

****Refer to Threats/Impacts Summary slides for more detailed information****

Wind Threats/Impacts - Summary

Tropical storm Ana will bring winds near tropical force through this evening with winds 30 to 40 mph and gusts to near 50 mph along the beaches of the coastal counties of Onslow and Carteret Counties.



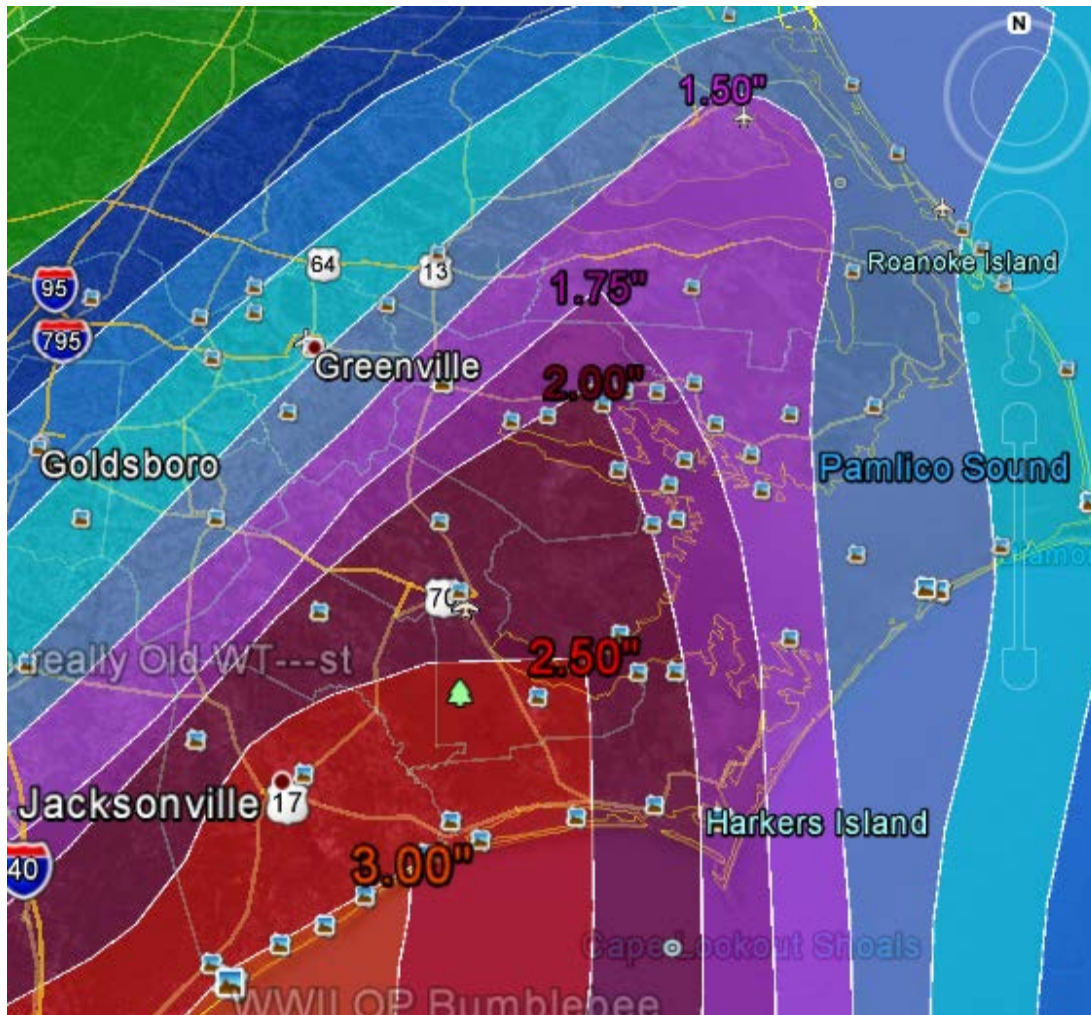
Today

Monday

Winds for coastal Onslow (likely the highest in our forecast area) show southeasterly winds of tropical storm strength today gradually diminishing this evening.

- **Power Outages** – Isolated power outages possible, especially near the coasts of Onslow and Carteret counties.
- **Tree Damage** – Some limbs and weak trees near the coast may be blown down.
- **Storm Surge** – Storm surge will average about 1-2 feet across the beaches of Onslow and Carteret counties resulting in some minor beach erosion as the center of Ana passes to our west.

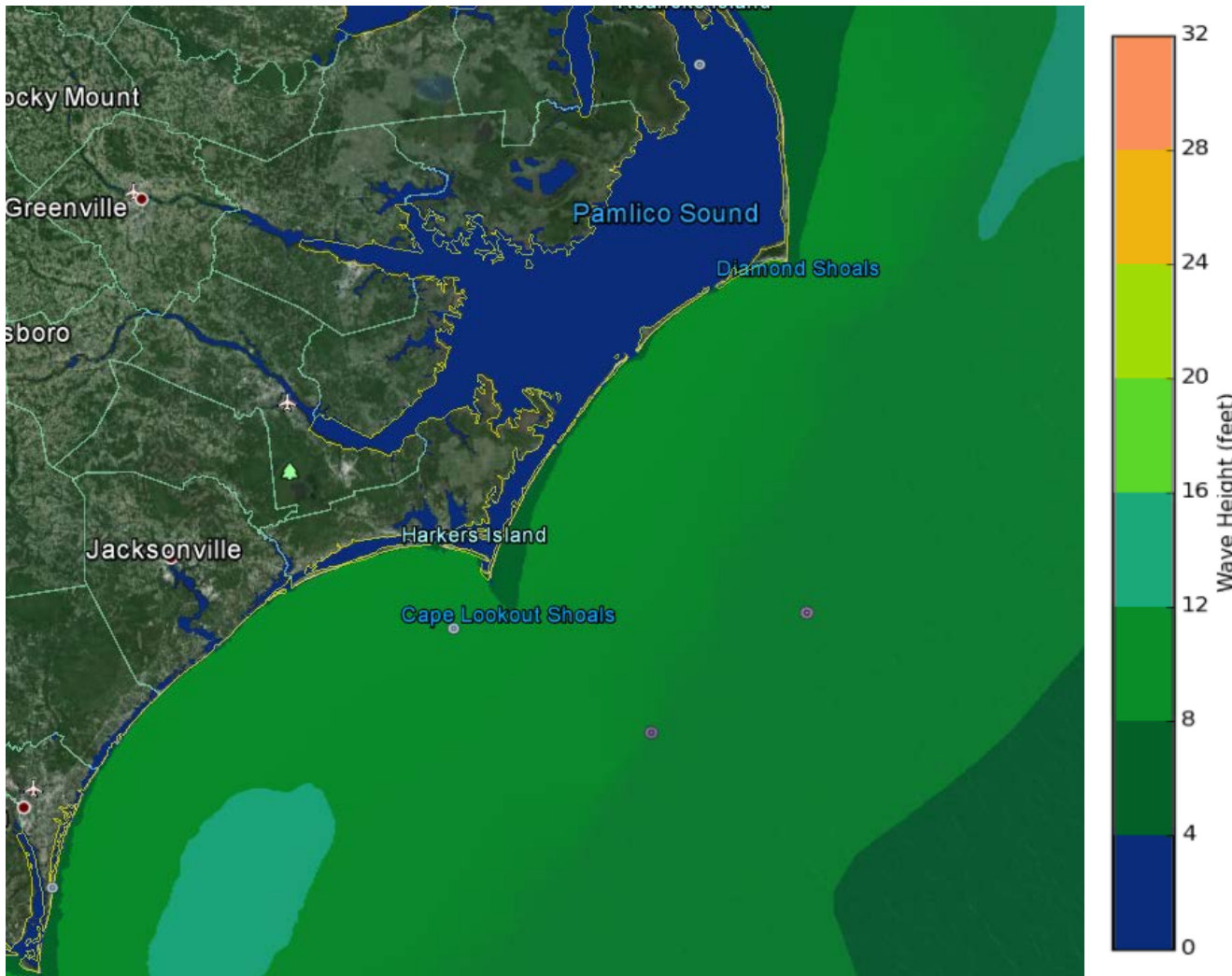
Potential Rainfall Amounts



- Storm total rainfall amounts of 1 to 3 inches possible across a good portion of the forecast area.
- Highest storm total rainfall amounts 2-3 inches expected across southern coastal areas extending inland along the Highway 17 corridor.

2 Day storm total values valid through Monday

Maximum Wave Heights



Maximum wave heights are forecast to be 2-4 feet across Pamlico sound with 6-9 feet along the immediate coast from Cape Lookout north to Diamond Shoals today into early Monday.

Waves of 4-8 feet are expected from Diamond Shoals up to Duck...mainly Monday night.

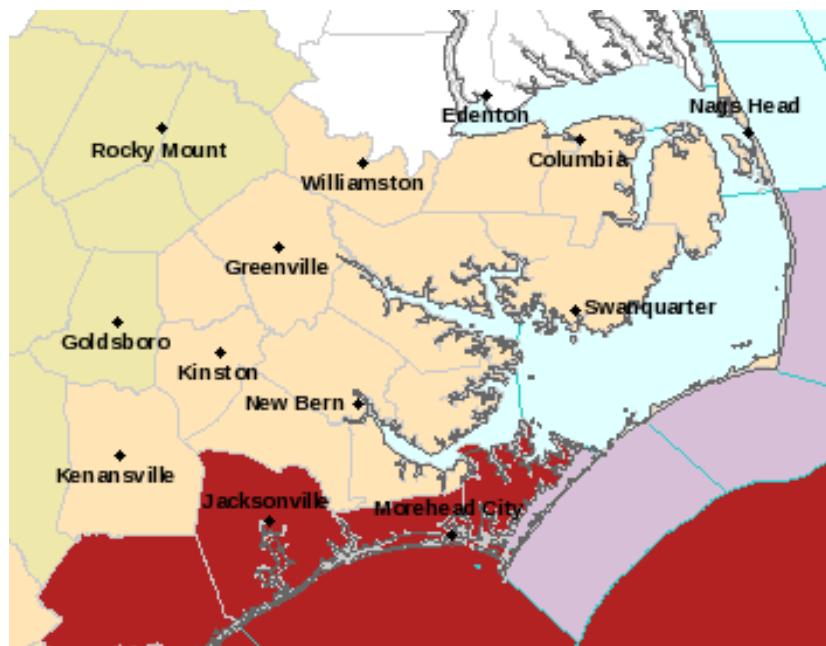
Offshore the waves can run up to 12-13 feet with some higher waves near the gulf stream.

Offshore...waves will reach their peak today then subside to 6-11 feet tonight and 5-9 feet by Monday night.

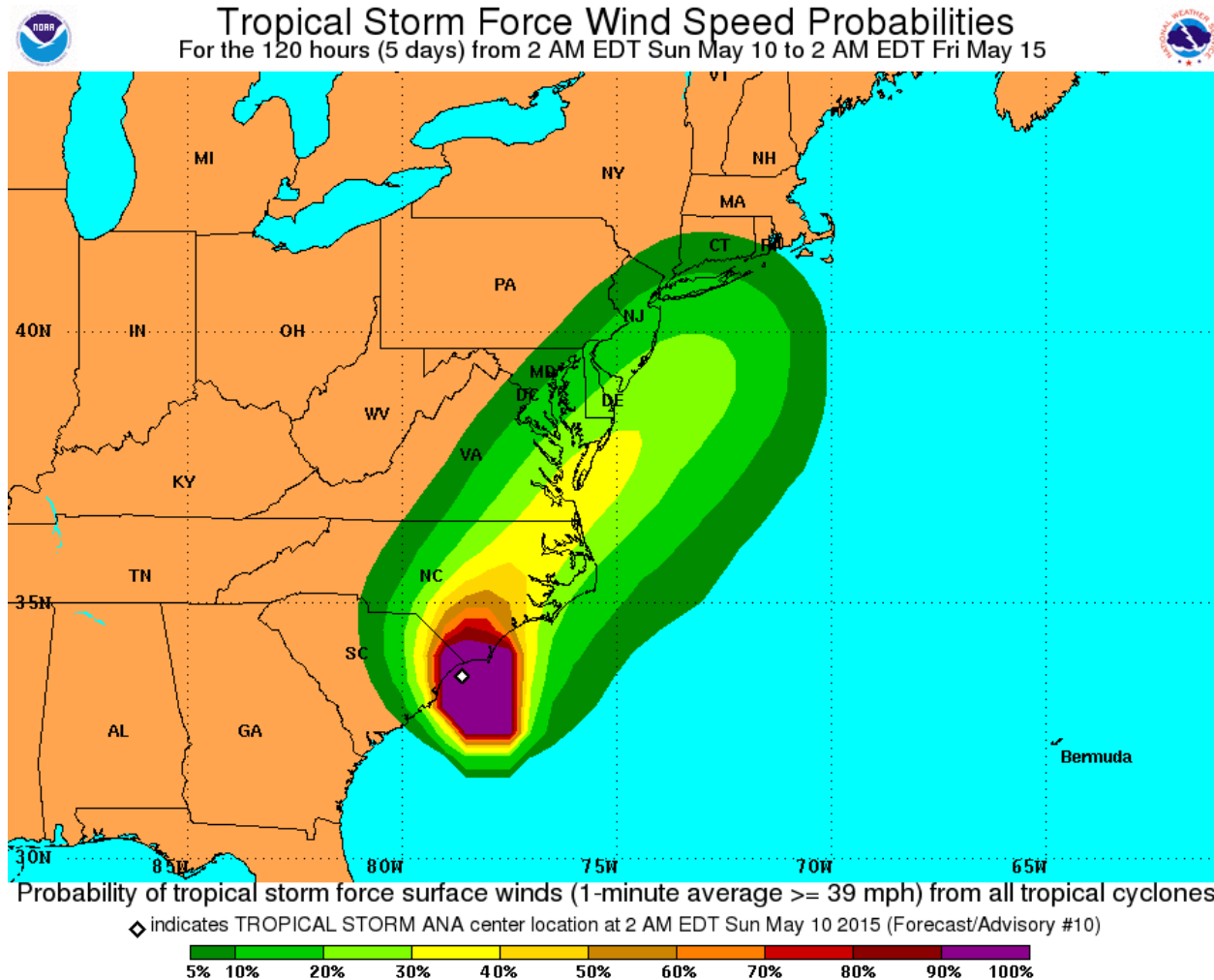
Marine, Surf, Aviation, and River Threats/Impacts

- ❑ Winds/Seas – Across the Coastal Waters (0 to 20 nm) winds will increase to 30 to 35 knots with gusts to 45 knots today. Seas will build to 7-13 ft. Conditions farther offshore, especially in the vicinity of the Gulf Stream will be much worse.
- ❑ Inlet entrances are expected to become hazardous as well, especially during the falling tide. The large incoming waves and currents in the inlet will generate large/steep waves.
- ❑ Rip Currents & Surf – Strong rip currents...large breaking waves...and strong longshore currents will create dangerous surf conditions at all local beaches.
- ❑ MVFR Ceiling are expected through the storm and IFR visibilities are possible during strong squalls as the rain bands cross the airfields through Sunday night. Strong SE winds will impact operations through this evening.
- ❑ With rainfall amounts about 1-3 inches all Rivers are expected to remain in their banks, but will need to be monitored if projected rainfall amounts increase.

Current Watches and Warnings – NO CHANGES



Tropical Storm Force (34 KT) Wind Speed Probabilities

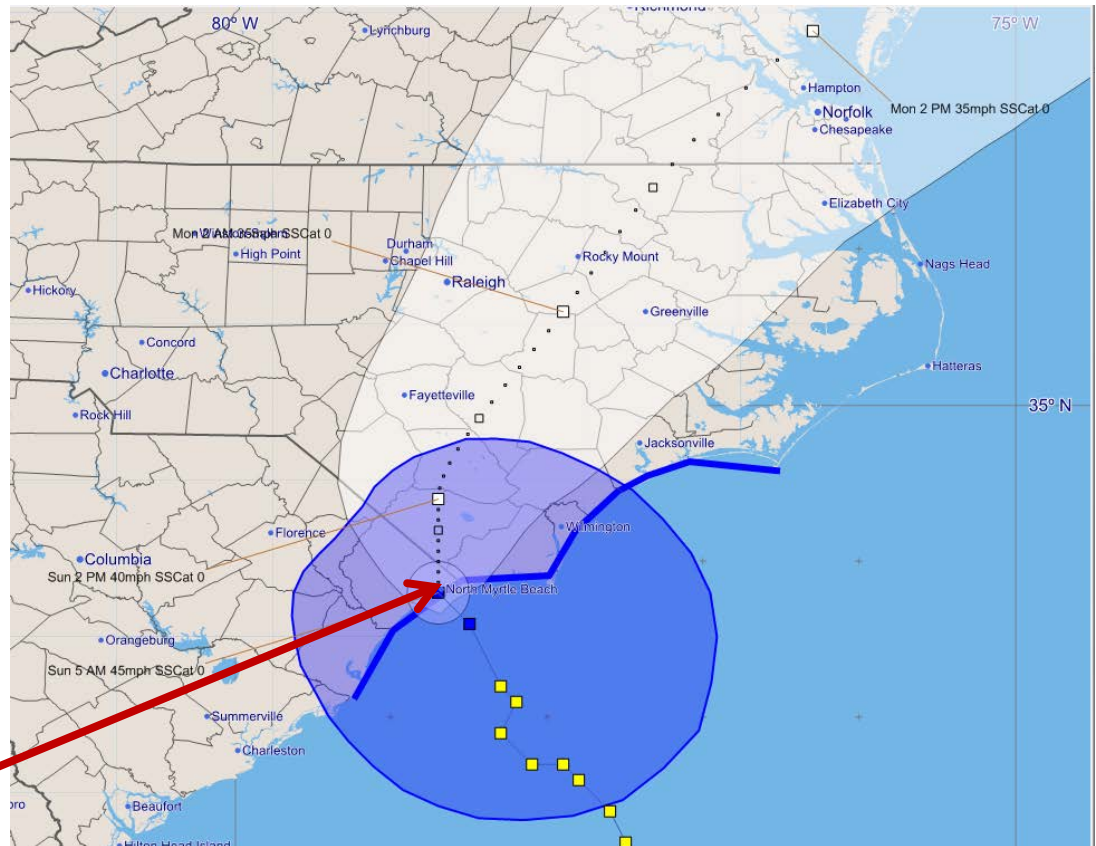


Official Track Information

■ The latest track shows a NNW movement that will bring the center of TS Ana to the SC/NC border before 7 am this morning.

■ Tropical storm force winds are expected across portions of Onslow and Carteret counties today and will likely continue into the evening.

Current Position

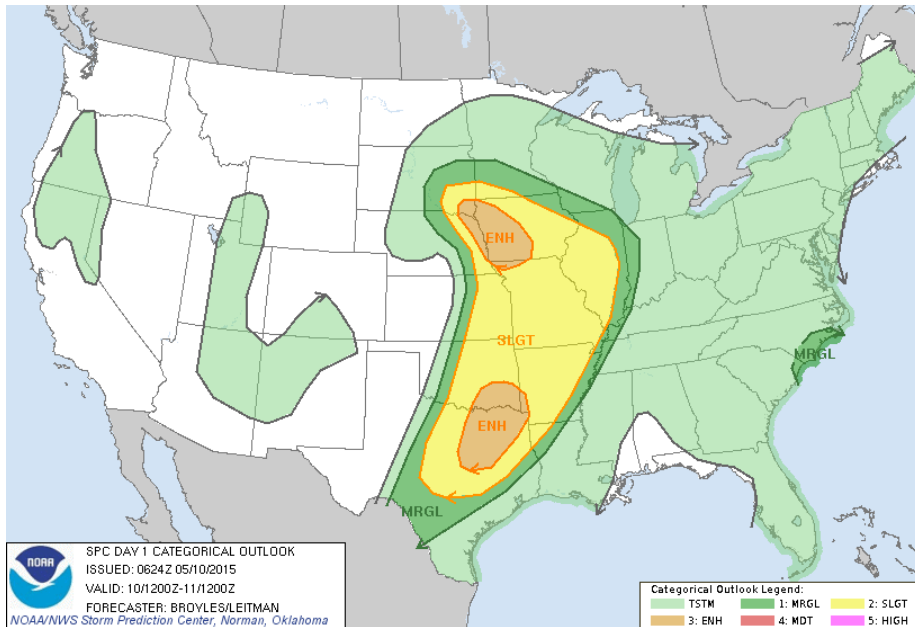


NHC Advisory # 10 5 AM EDT Sun May 10, 2015

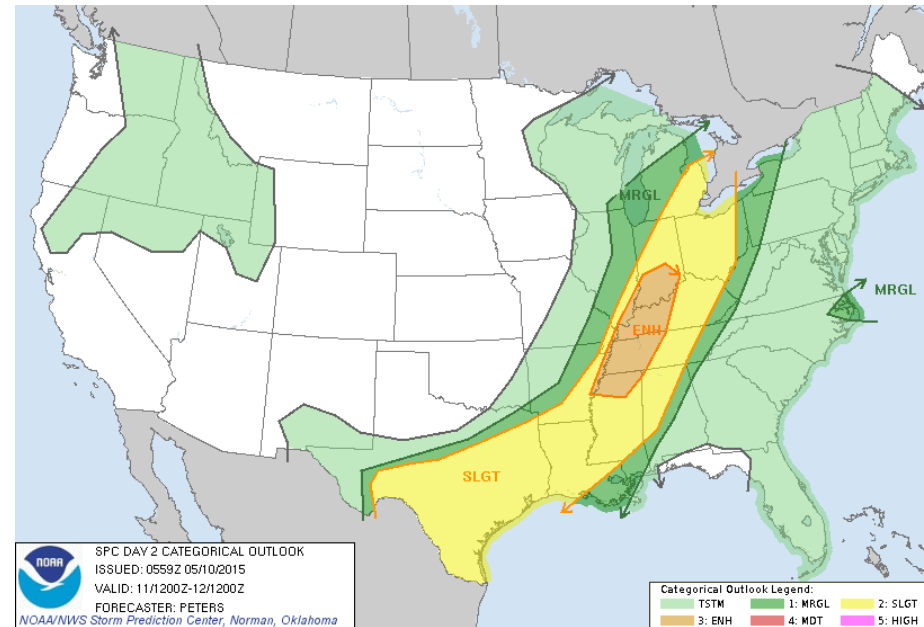
***Note:** This graphic does not represent an impact swath, and also note that statistically, one third of the time the storm can be outside the 5 day error cone.

SPC Convective Outlooks

Outlook for Today



Outlook for Monday



An isolated severe wind gust or tornado threat is possible across eastern NC today through Monday associated with Ana.

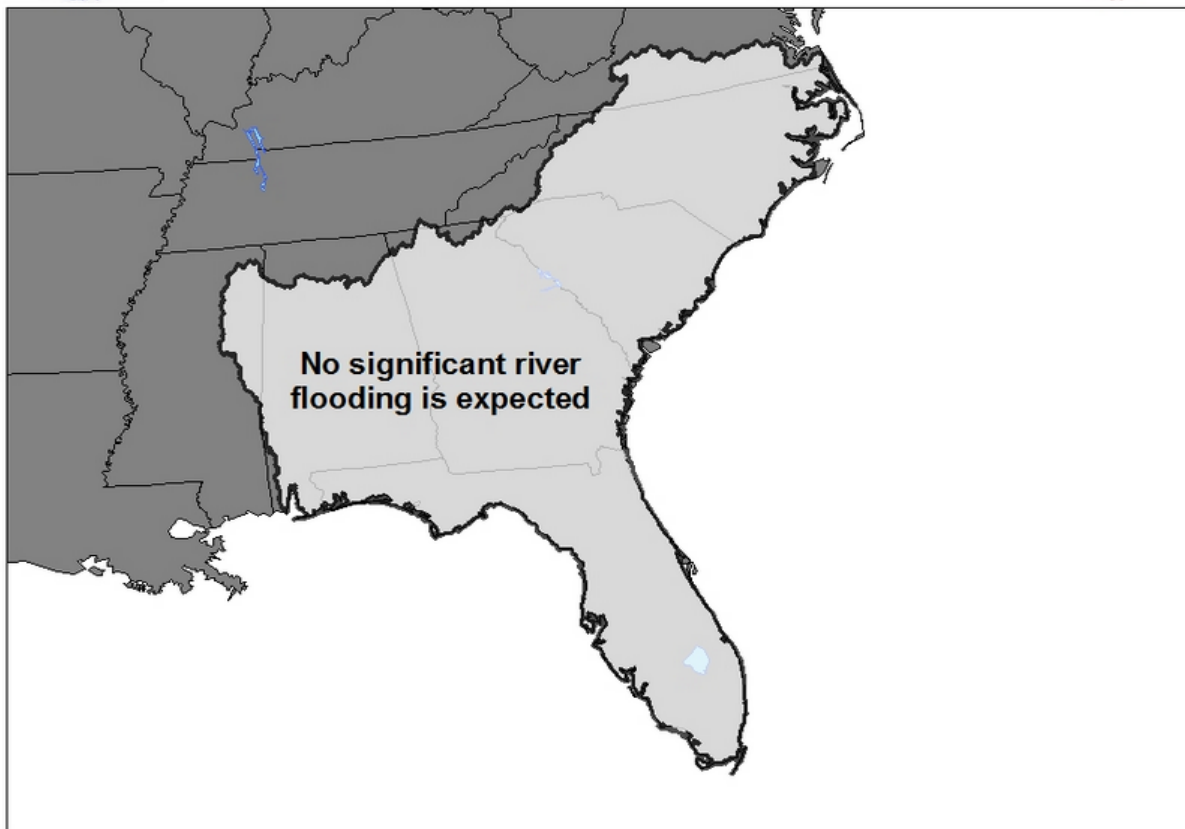
SERFC River Flood Outlook – NO CHANGES



Significant River Flood Outlook

Valid: 5/9/2015 - 5/14/2015

Southeast River Forecast Center 5/9/2015 10:46:43 AM



No significant river
flooding is expected



**SIGNIFICANT RIVER
FLOODING POSSIBLE.**



**SIGNIFICANT RIVER
FLOODING LIKELY.**



**SIGNIFICANT RIVER
FLOODING OCCURRING
OR IS IMMINENT.**

Significant River Flooding Impacts include:
Roads adversely affected. Residential,
commercial, industrial, and/or agricultural
areas affected. May require evacuation of people.

NOTE: Flash Flooding or Minor River Flooding
will NOT be included in this outlook.

The SERFC is not
Expecting any of our
rivers to go into
flood stage during the
next several days.

**This could change if
rainfall amounts are
significantly higher than
what we are forecasting
from TS ANA.**

Rivers will be watched
closely

Rainfall Forecasts (QPF)

<http://www.wpc.ncep.noaa.gov/qpf/qpf2.shtml>

National Hurricane Center

<http://www.nhc.noaa.gov/>

Storm Prediction Center

<http://www.spc.noaa.gov/>

NOAA/NWS Newport/Morehead City
For updates call the forecaster on Duty
(252) 223-5122 x5



Facebook:

<https://www.facebook.com/NWSMoreheadCity>



Twitter:

<https://twitter.com/nwsmoreheadcity>



Web:

<http://www.weather.gov/mhx>