



It is our mission to protect your health, but we need you to do your part.

# COVID-19 Surveillance Data

Beaufort County Health Department

1436 Highland Drive, Washington, North Carolina 27889

252.946.1902

Updates are generally completed daily during the work week though some data is compiled weekly or monthly.



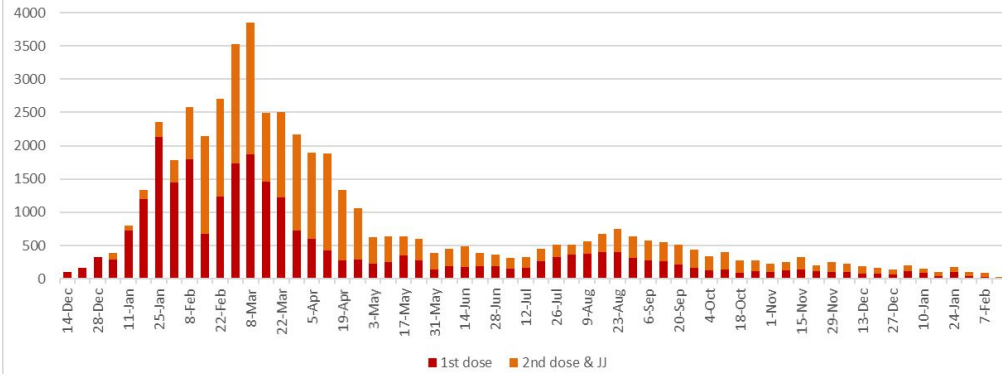
Wednesday, March 2, 2022			
Tests conducted on Beaufort county residents (to date)	75,445		
Total cases (tested positive)	12,678		
Total hospitalizations that have occurred	452	3.6%	
Total Deaths*	153	1.2%	
Average age of deaths (years)	74.6		
Known active cases currently in the county	392		
Currently hospitalized	6	1.5%	
Currently on a ventilator	-		
Total cases recovered	12,133	95.7%	
Seven (7) day average case rate	<b>11.6</b>		
Positive cases June 1 to Dec 31 (2021)**	3,447		
Breakthrough (positive after completing vaccination)**	663	19%	
Positive cases since Jan 1, 2022 (Omicron influence)***	4,567		
Breakthrough (this data lags behind case count)	1,624	36%	
Deaths* from long term care facilities	58	38%	
<p>*Deaths reported through this website have been confirmed through a review of the death certificates. This validation process can sometimes take a long time when a resident passes in another County or State. Other sources may report presumptive totals and therefore will vary with those reported here.</p>			
<p>**June 1, 2021 is used as a starting point due to first breakthrough case and start of Delta Variant detected in area.</p>			
<p>***This period is used to determine influence of Omicron Variant on County</p>			

# COVID-19 Vaccination Information:

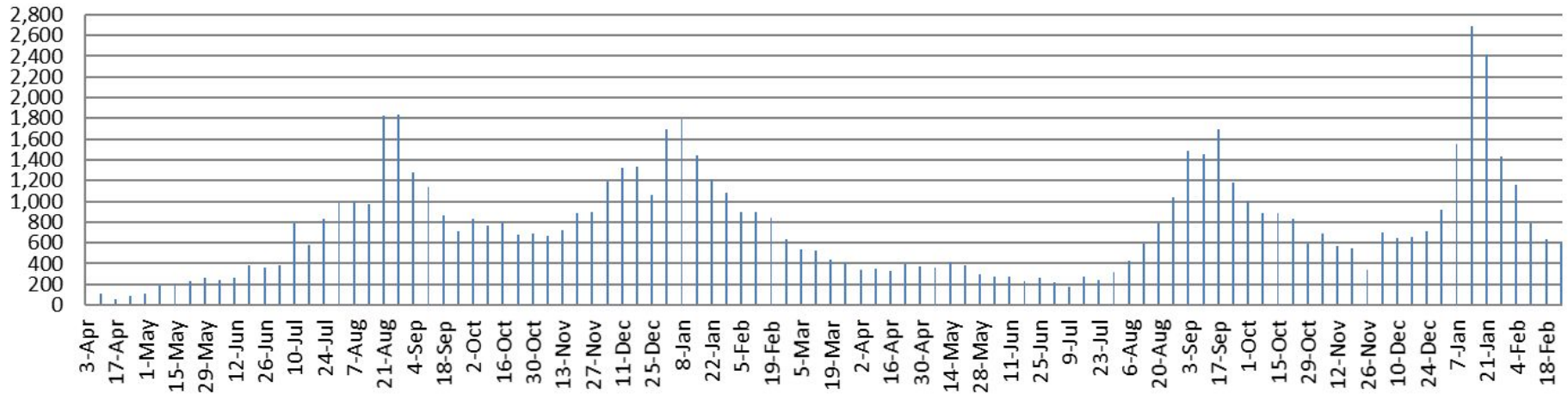
[Click Here for more Information on the COVID Vaccination](#)

Tuesday, March 1, 2022		Total
Beaufort County Population (NCSCHS)		47,079
Residents that are partially vaccinated against COVID-19	27,022	57.4%
Completed COVID-19 vaccine series (all vaccines)	25,352	53.8%
Received extra dose or has been given a booster	12,531	
Population over 65 years of age (NCSCHS)	11,281	
Over 65 that have received first dose of COVID-19 vaccine	10,757	95.4%
Over 65 that have completed series	10,338	91.6%
Adult Population (18 and older)	37,758	
Partially vaccinated	25,624	67.9%
Fully vaccinated	24,172	64.0%
12-17 year olds vaccinated	3,295	
Partially vaccinated	1,023	31.0%
Fully vaccinated	886	26.9%
5-11 year olds vaccinated	3,604	
Partially vaccinated	375	10.4%
Fully vaccinated	294	8.2%

Vaccinations Received by Beaufort County Residents per Week



### Beaufort County Number of Tests Conducted (weekly totals) as of 2/25/2022

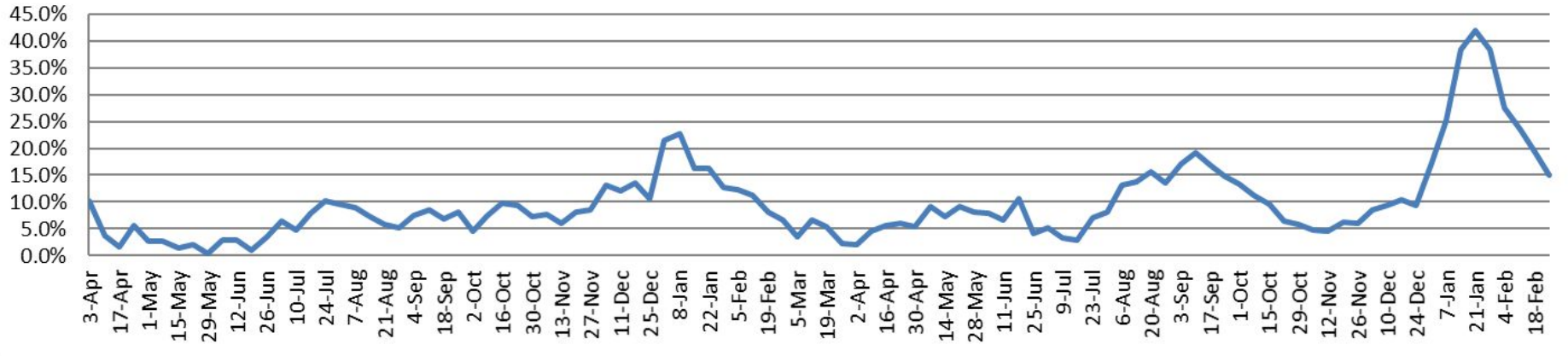


This data is usually compiled on Monday for the previous week's count.



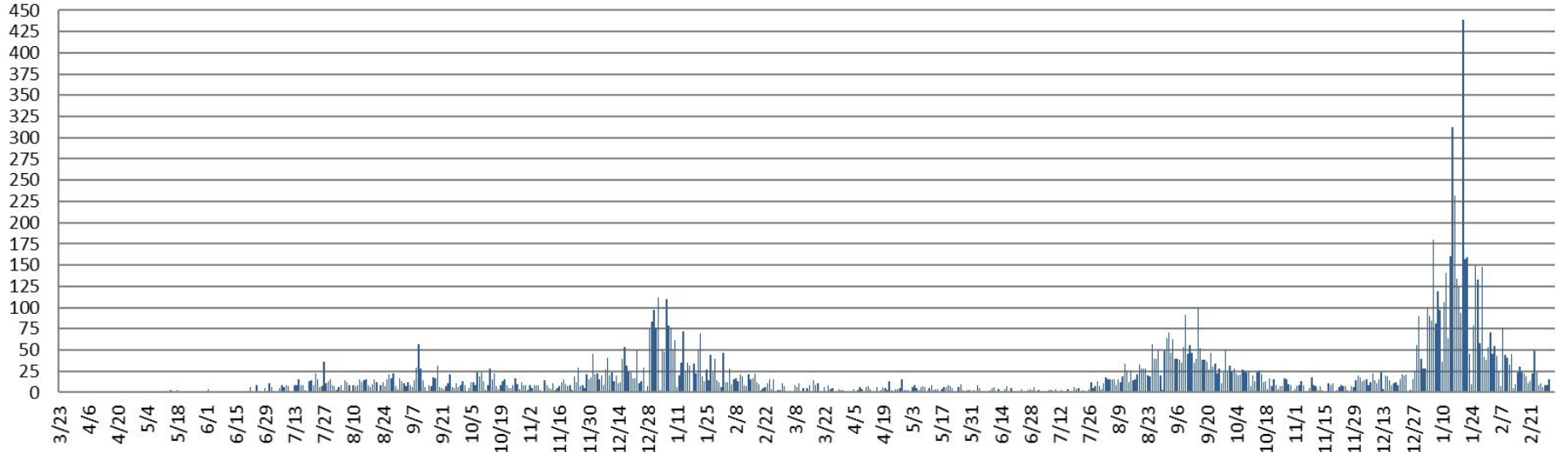
For the week ending February 25th:  
15.0% of the 593 residents, tested in Beaufort County,  
tested positive.

**Beaufort County Percent of Tests Resulting as Positive  
(Calculated weekly) as of 2/25/2022**

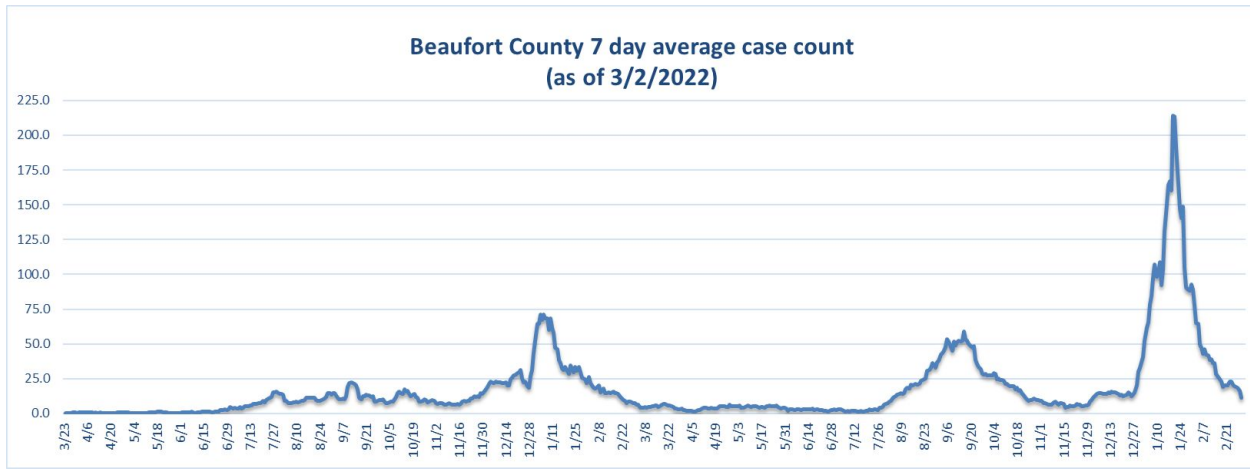


This data is usually compiled on Monday for the previous week's count.  
Only tests conducted in the county and results known.

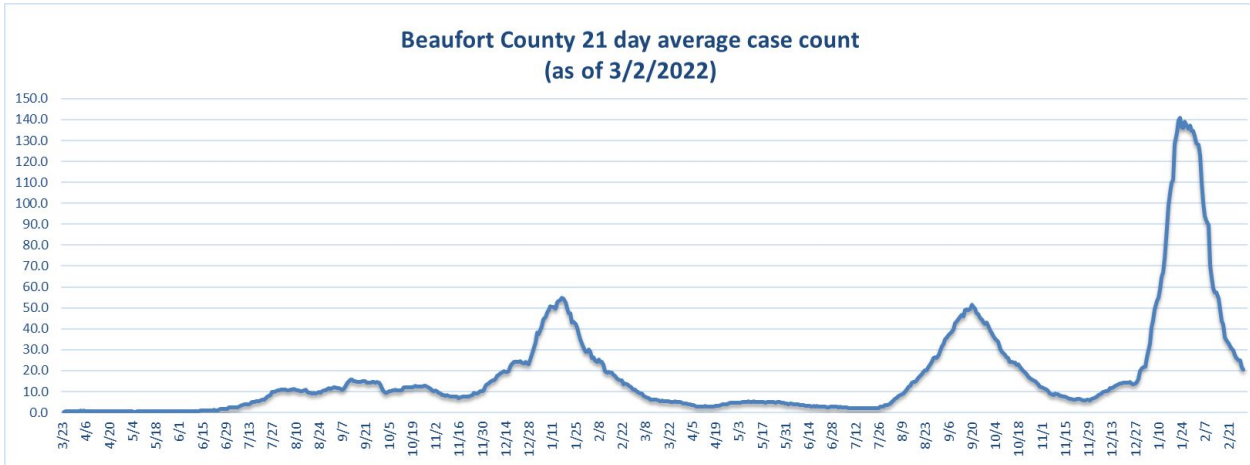
### Beaufort County daily case count timeline (as of 3/2/2022)



## 7 Day Average



## 21 Day Average



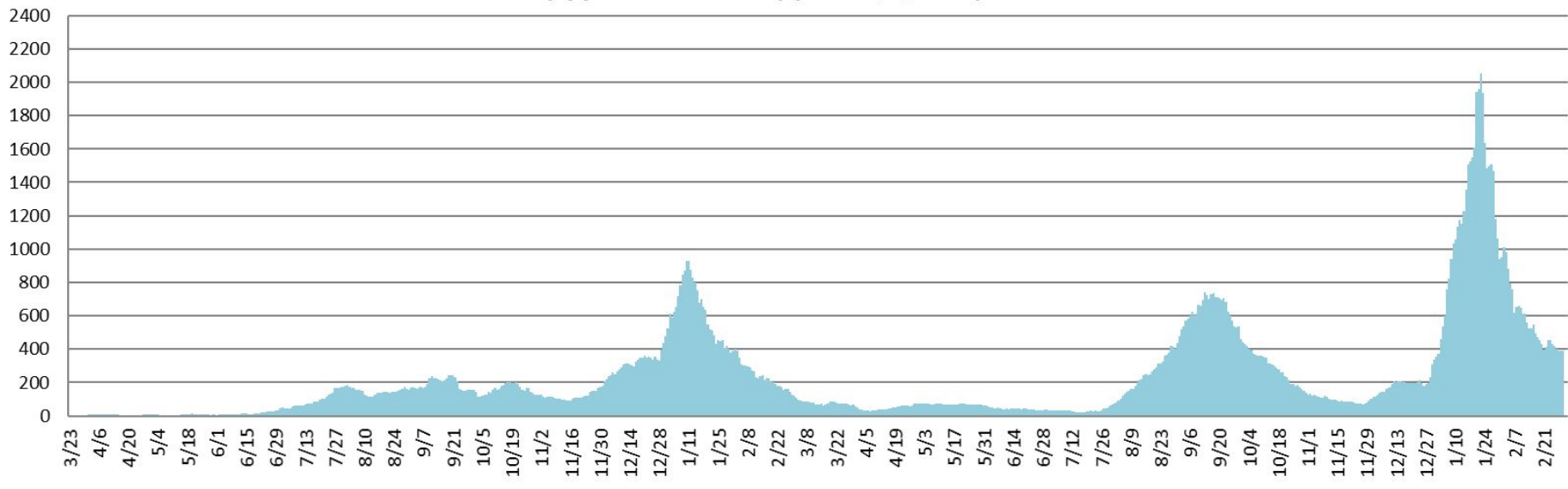
A 21 day average count reduces the weekly variability which may make it more difficult to follow the overall trend.

### Beaufort County 7 day average case count 7/1/2021 to 3/2/2022

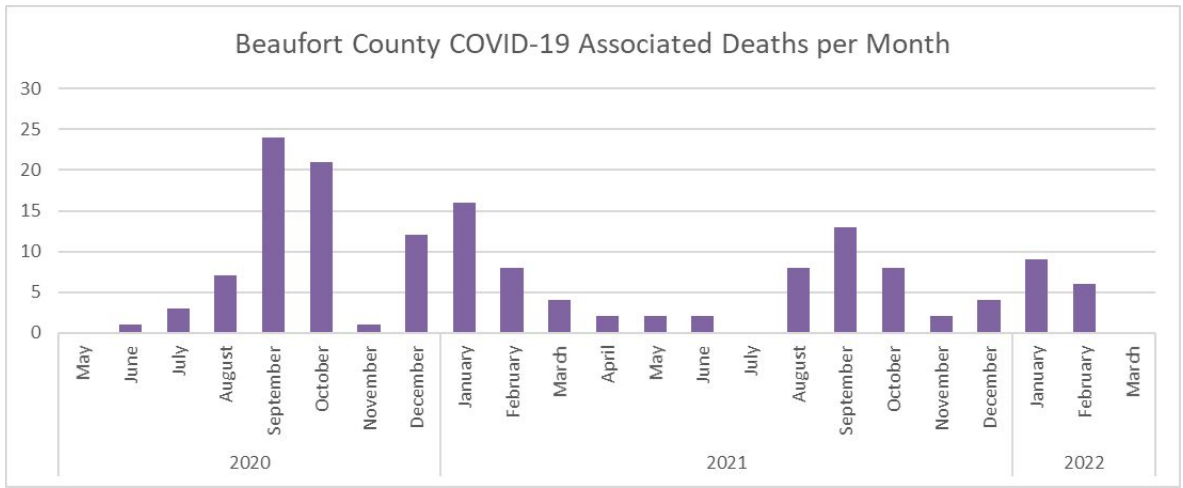
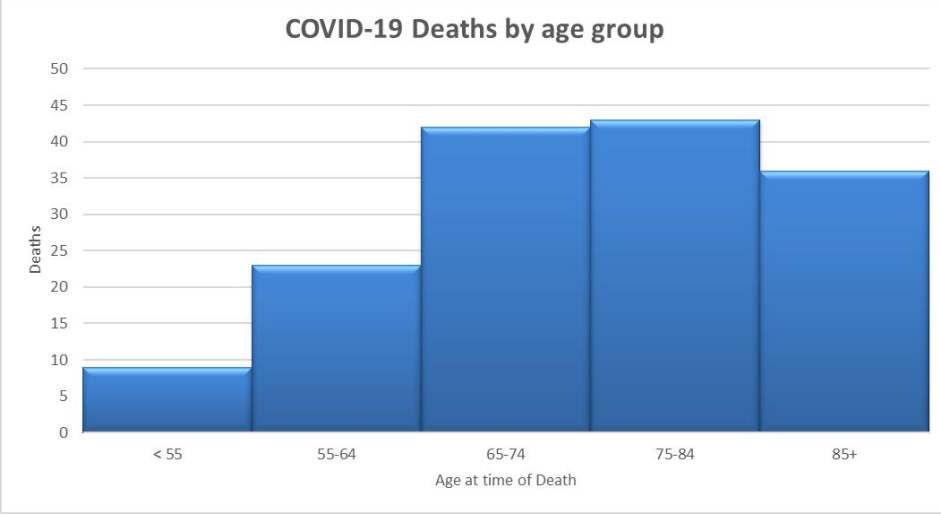




**Beaufort County daily active cases  
(approximate count) (as of 3/2/2022)**



# Beaufort County Associated Deaths (153 total)



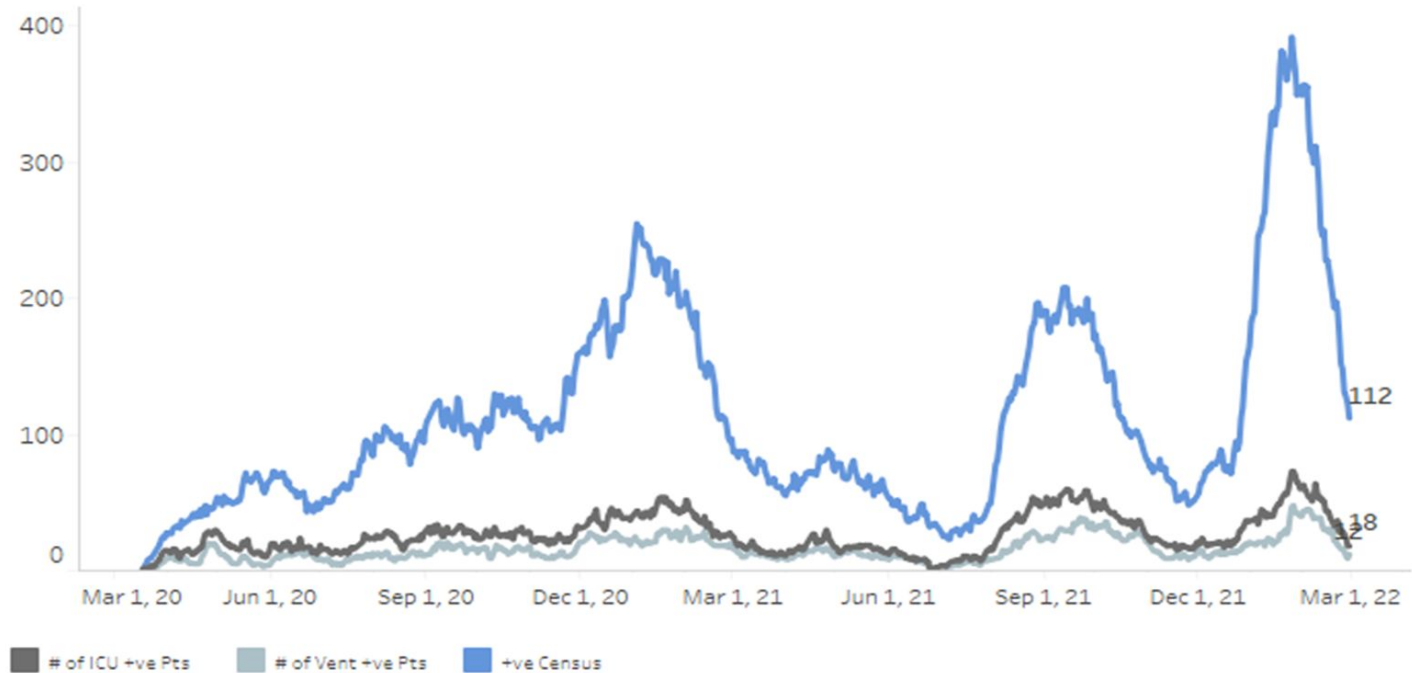
Selected Demographic Information of positive COVID cases (N=11,909)				153	
	Expected %*	Number	Percent	Deaths	
<b>Race (ethnicity)</b>					
White (non-Hispanic)	65.9%	7059	59%	104	68.0%
Black (non-Hispanic)	24.8%	1595	13%	41	26.8%
Hispanic	8.0%	939	8%	7	4.6%
Other	1.3%	1519	13%	1	0.7%
Unk		797	7%		
<b>Gender</b>					
F	52.5%	6615	55.5%	76	49.7%
M	47.5%	5280	44.3%	77	50.3%
missing		14	0.1%		
<b>Age Cohort</b>					
0-17	19.6%	2093	17.6%	0	
18-24	7.6%	1278	10.7%	0	
25-49	22.0%	4095	34.4%	5	3.3%
50-64	21.8%	2401	20.2%	27	17.6%
65+	24.0%	2042	17.1%	121	79.1%
unk		0	0.0%		
<b>*2019 USCB population estimates</b>					

# Vidant Regional Information (9 facilities total) - data released 2/22/2022

This chart is daily total number Vidant Health Covid-19 patients hospitalized.

Inpatients —  
ICU —  
On ventilator —

## Daily Census - IP, ICU, Vent



## Variants by %

