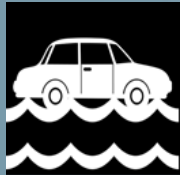


# Severe Weather Overview

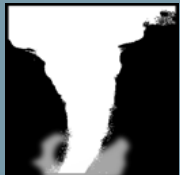
## Impacts



**Damaging Winds/Hail** producing isolated structural/tree damage and power outages.



**Heavy Downpours** producing localized flooding of poor drainage areas.



**Isolated Tornadoes** possible, leading to locally heavier damage.

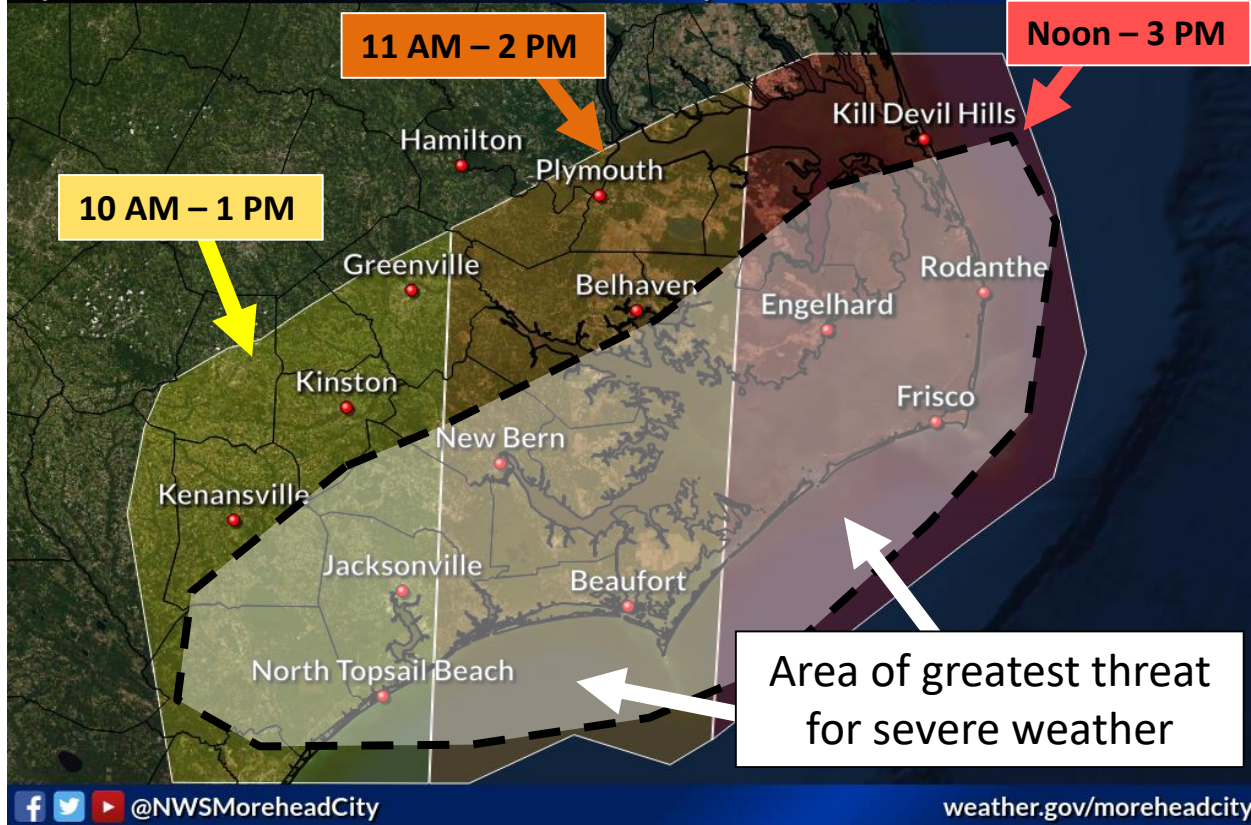


**Strong Sustained Winds** will also lead to blowing around of light/unsecured objects along the Outer Banks Monday afternoon.

## Severe Weather Timing

Expected Arrival of Greatest Severe Weather Threat Monday

Weather Forecast Office  
Newport/Morehead City, NC  
Issued Apr 19, 2020 4:28 PM EDT



- Severe weather possible beginning overnight tonight, but the strongest storms will arrive late morning through early afternoon Monday.
- The greatest threat for severe weather exists across coastal areas, where scattered thunderstorms could bring damaging wind gusts and hail, with tornadoes also possible.