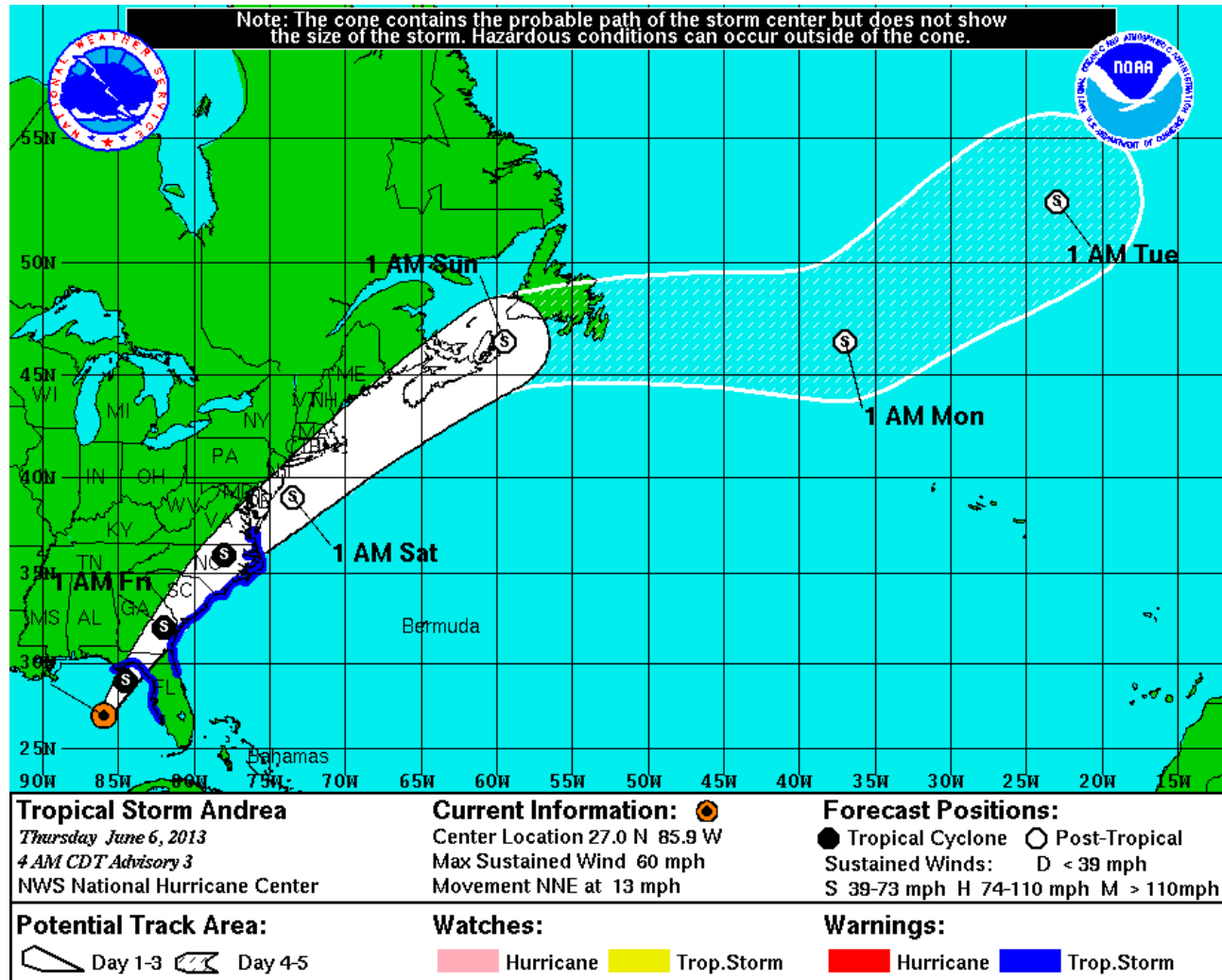


Tropical Storm Andrea Weather Briefing

Eastern North Carolina Threat Assessment Friday, June 7th

National Weather Service
Newport/Morehead City, NC

Tropical Storm Andrea Forecast Track



Tropical Storm Andrea is forecast to move northeast out of the Gulf of Mexico, across Florida, and then across the Coastal GA, SC, and NC.

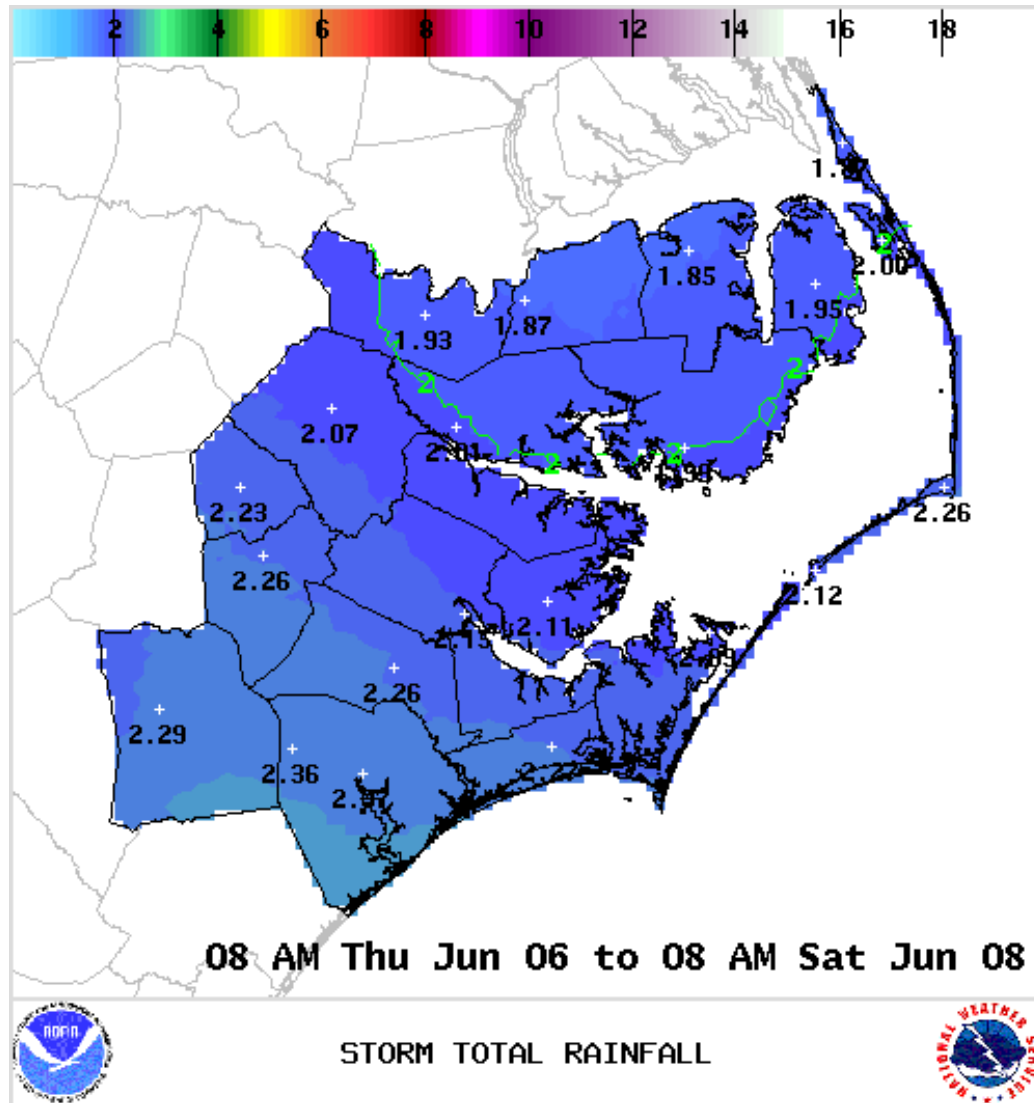
Threat Summary

- **A Tropical Storm Warning has been issued for portions of Eastern NC.**
- **Isolated Tornadoes/Waterspouts:**
 - There will be a chance of tornadoes/waterspouts as Andrea crosses our region late tonight into Friday. ***It is too soon to know the exact track and timing to be able to thoroughly assess the exact nature of this threat***, but should the storm track just inland during the day on Friday we would expect at least a chance of a few isolated tornadoes in Eastern NC.
- **High Winds/Seas in the Coastal Waters and Sounds:**
 - Winds will reach sustained 25-35 knots with gusts 40 to 45 knots. Seas will reach 7 to 14 feet in the coastal waters. ***Conditions will be at their worst beginning early Friday Morning through Friday Night.***
- **Winds Gusting to 25-30 MPH Inland, 35-45 MPH Along the Coast:**
 - The threat from sustained tropical storm force winds of 39 mph will likely remain east of Highway 17. ***A few small tree limbs could be knocked down with very minor impacts to weak structures and perhaps an isolated power outage .***

Threat Summary (continued)

- **Isolated Minor Flooding:**
 - Periods of heavy rainfall will begin to move into the area this afternoon and continue tonight and Friday. Storm total rainfall of 2-4 inches is expected with locally higher amounts possible. Given current rivers and streams are running at or below normal levels and relatively dry conditions recently, most locations should be able to handle this amount of rainfall. ***Most minor flooding concerns will be in urban and low lying poor drainage areas.***
- **Rough Surf and Rip Currents:**
 - Rough surf with 6 to 9 foot breaking waves and an increased risk of rip currents is likely on Friday, especially for beaches with any type of southern exposure. ***Erosion impacts will likely be minor, but swimmers should stay out of the water on Friday.***
- **Minor Coastal Flooding Water Levels 1-3 feet above MSL, or up to 1 foot above ground:**
 - Andrea will be a relatively fast moving system, which should limit the coastal flooding threat. ***The best chances for a minor impact will be along the Pamlico Sound from Swanquarter to Engelhard, and Southern Roanoke Island.***

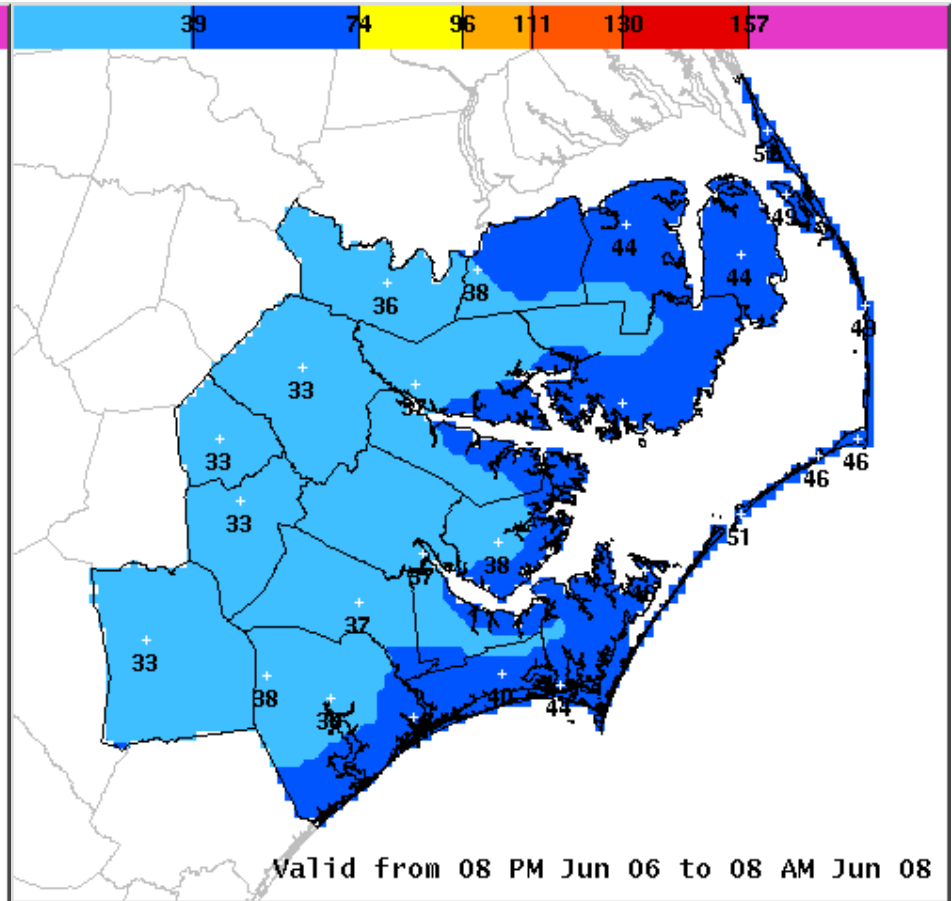
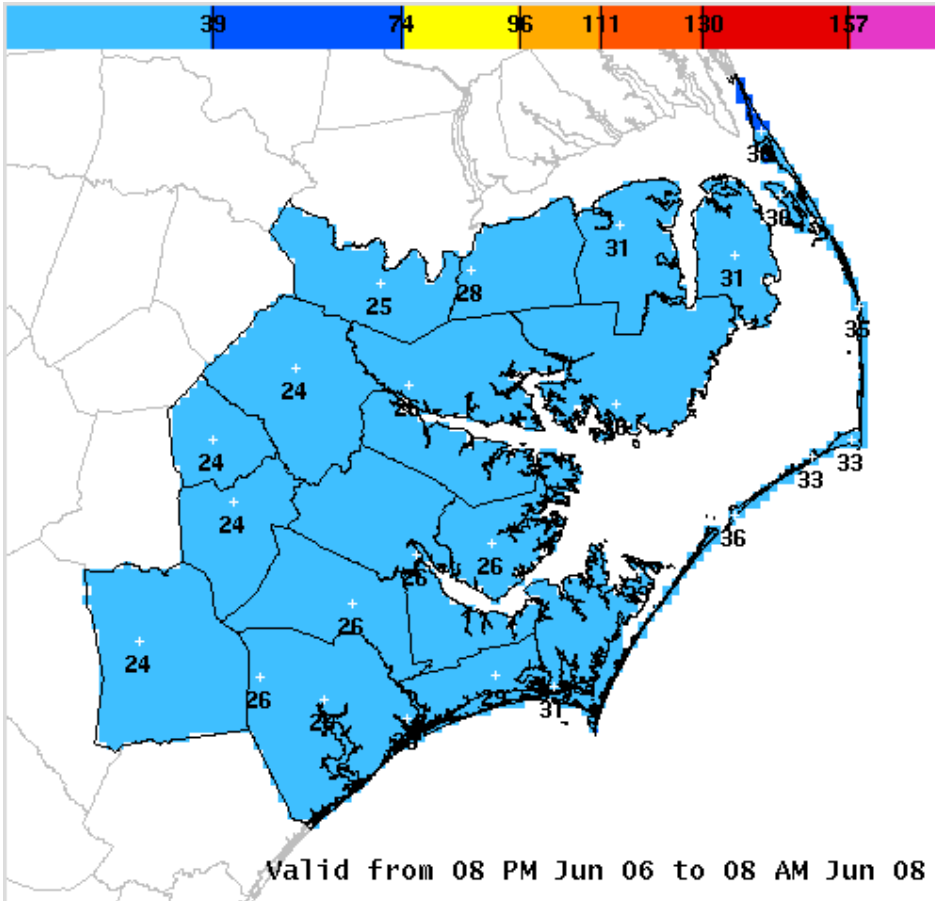
Total Storm Total Rainfall



Inland Wind Forecast

Peak Sustained Winds

Peak Wind Gusts



MAXIMUM SUSTAINED WIND (MPH)



MAXIMUM WIND GUST (MPH)



For updates call the forecaster on Duty
(252) 223-5122 x5

References: NWS Newport/Morehead City
<http://www.erh.noaa.gov/mhx/>

Rainfall Forecasts (QPF)
<http://www.hpc.ncep.noaa.gov/qpf/qpf2.shtml>

National Hurricane Center
<http://www.nhc.noaa.gov/>