

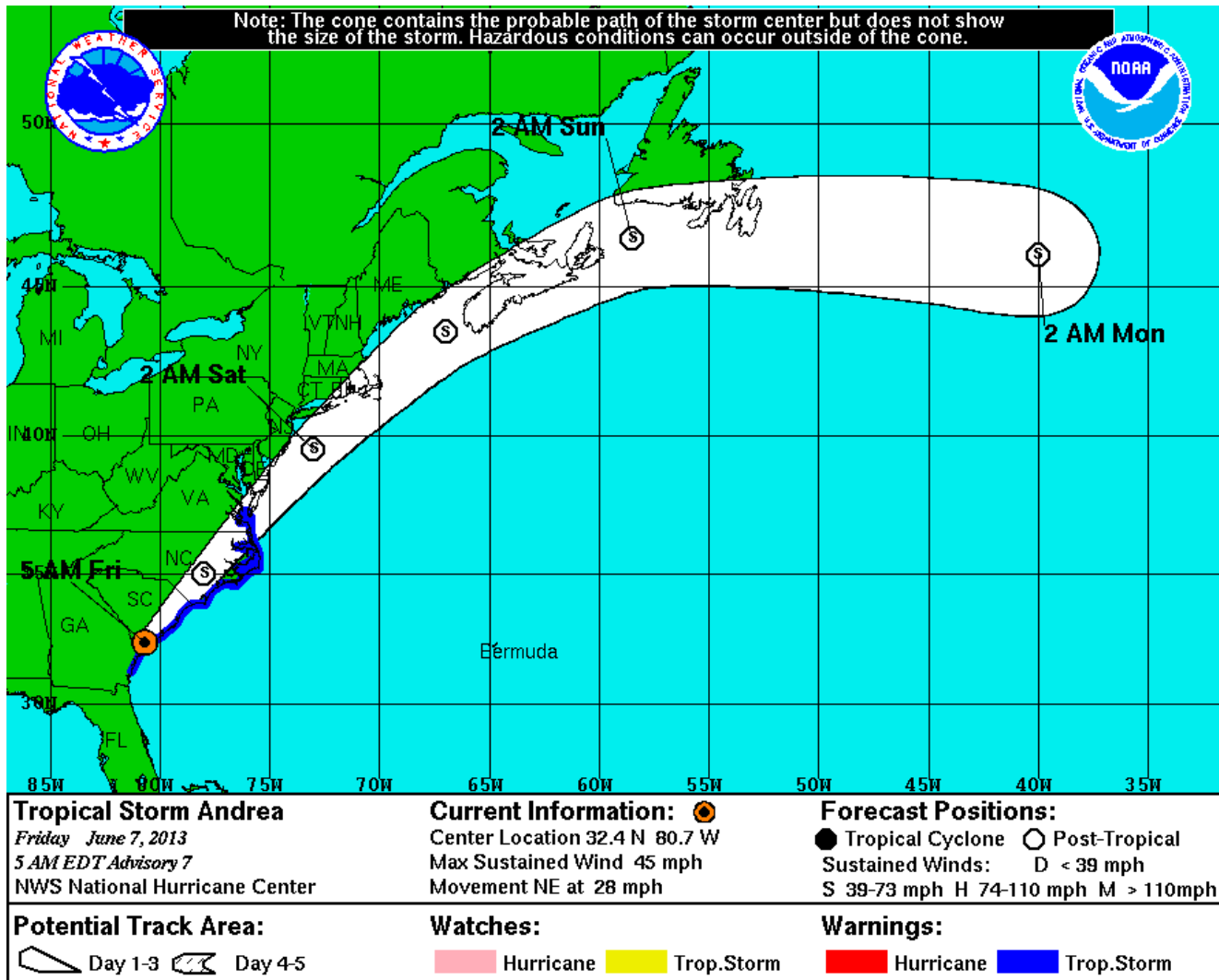
# Tropical Storm Andrea Weather Briefing

## Eastern North Carolina Threat Assessment Friday, June 7<sup>th</sup>

National Weather Service  
Newport/Morehead City, NC

*Time/Date Created: 600 AM EDT 6/7/2013*

# Tropical Storm Andrea Forecast Track



Tropical Storm Andrea is forecast to move up the Carolina coast today...then off the Mid-Atlantic coast tonight.

# Threat Summary

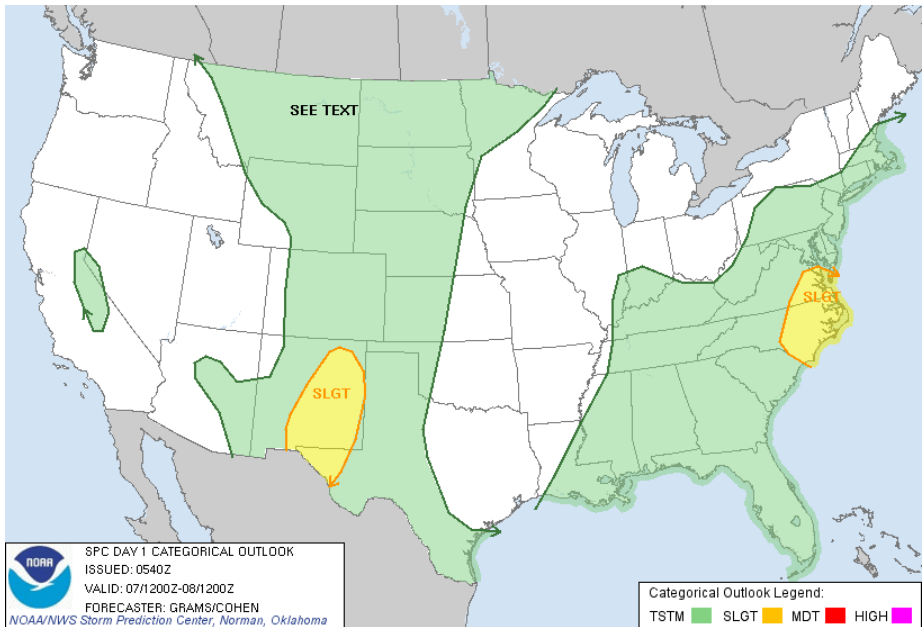
- **A Tropical Storm Warning is in effect for portions of Eastern NC.**
- **A Tornado Watch has been issued for all of Eastern NC through 1 pm**
- **A Flood Watch is in effect for all of eastern NC through 8 pm**
  
- **Isolated Tornadoes/Waterspouts:**
  - There will be a chance of tornadoes/waterspouts as Andrea crosses our region this morning into early afternoon. ***The best chance for isolated tornadoes will be along the coastal areas this morning.***
  
- **High Winds/Seas in the Coastal Waters and Sounds:**
  - Winds will reach sustained 25-35 knots with gusts to 50 knots. Seas will reach 10 to 15 feet in the coastal waters. ***Conditions will be at their worst beginning this morning through tonight.***
  
- **Winds Gusting to 25-40 MPH Inland, 40-50 MPH Along the Coast:**
  - The threat from sustained tropical storm force winds of 39 mph will likely remain east of Highway 17. ***A few small tree limbs could be knocked down with very minor impacts to weak structures and perhaps an isolated power outage .***

# Threat Summary (continued)

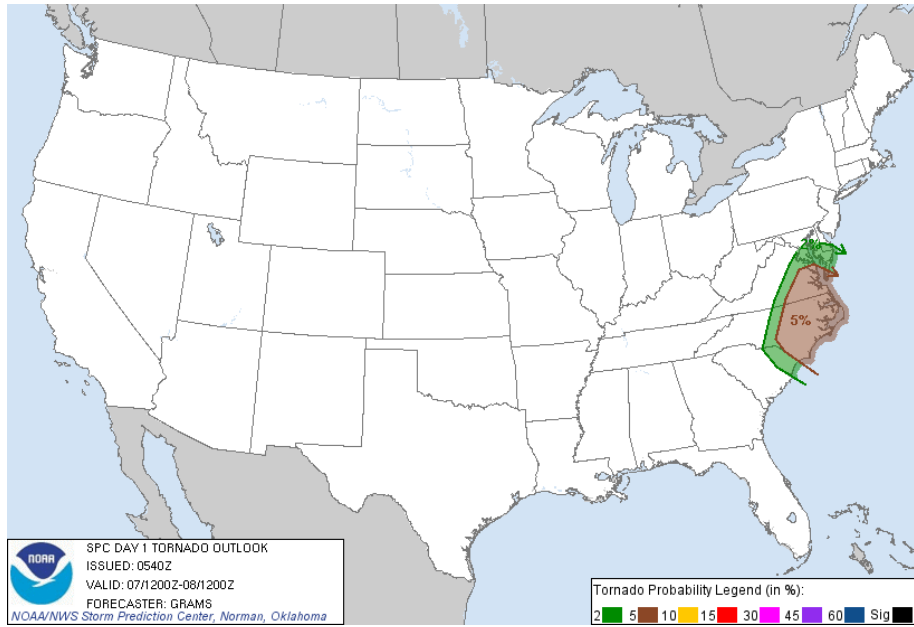
- **Isolated Minor Flooding:**
  - Periods of heavy rainfall will continue today...with widespread heaviest rain this morning. Storm total rainfall of 2-4 inches is expected with locally higher amounts possible. Later today the showers will become more scattered, but still could produce very heavy rain. Given current rivers and streams are running at or below normal levels and relatively dry conditions recently, most locations should be able to handle this amount of rainfall. ***Most minor flooding concerns will be in urban and low lying poor drainage areas.***
- **Rough Surf and Rip Currents:**
  - Rough surf with 6 to 8 foot breaking waves and an increased risk of rip currents is likely today, especially for beaches with any type of southern exposure. ***Erosion impacts will likely be minor, but swimmers should stay out of the water on today.***
- **Minor Coastal Flooding Water Levels 1-3 feet above MSL, or up to 1 foot above ground:**
  - Andrea will be a relatively fast moving system, which should limit the coastal flooding threat. ***Areas most at risk include locations adjacent to the Pungo River...Roanoke Island...Sound side on Hatteras Island north of Rodanthe and the south facing beaches.***

# SPC Convective Outlook Today

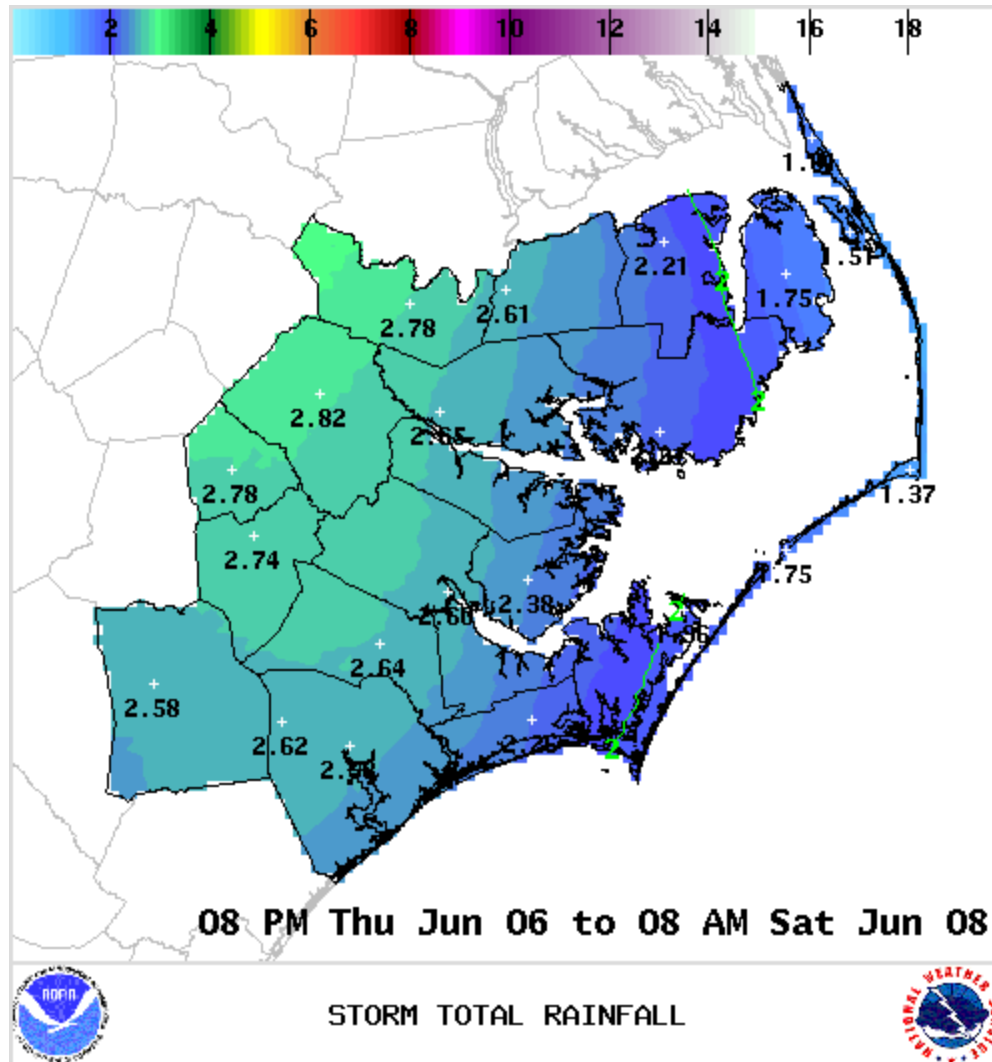
## Categorical Outlook



## Tornado Probabilities

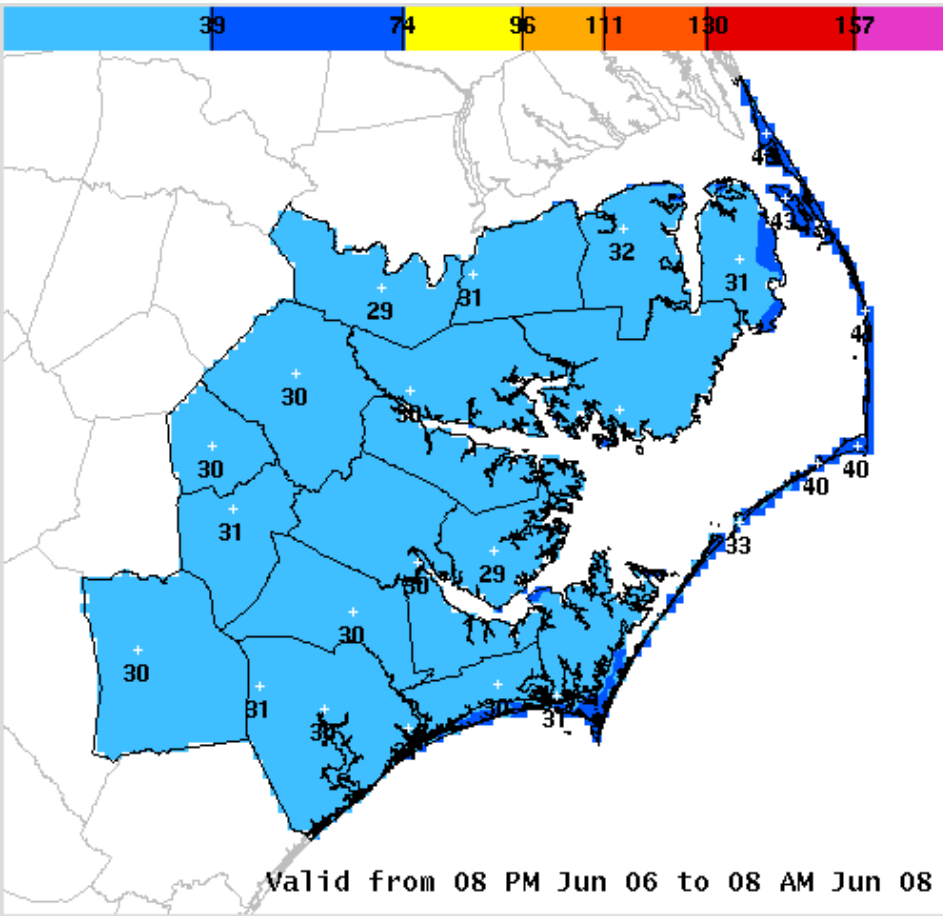


# Total Storm Total Rainfall



# Inland Wind Forecast

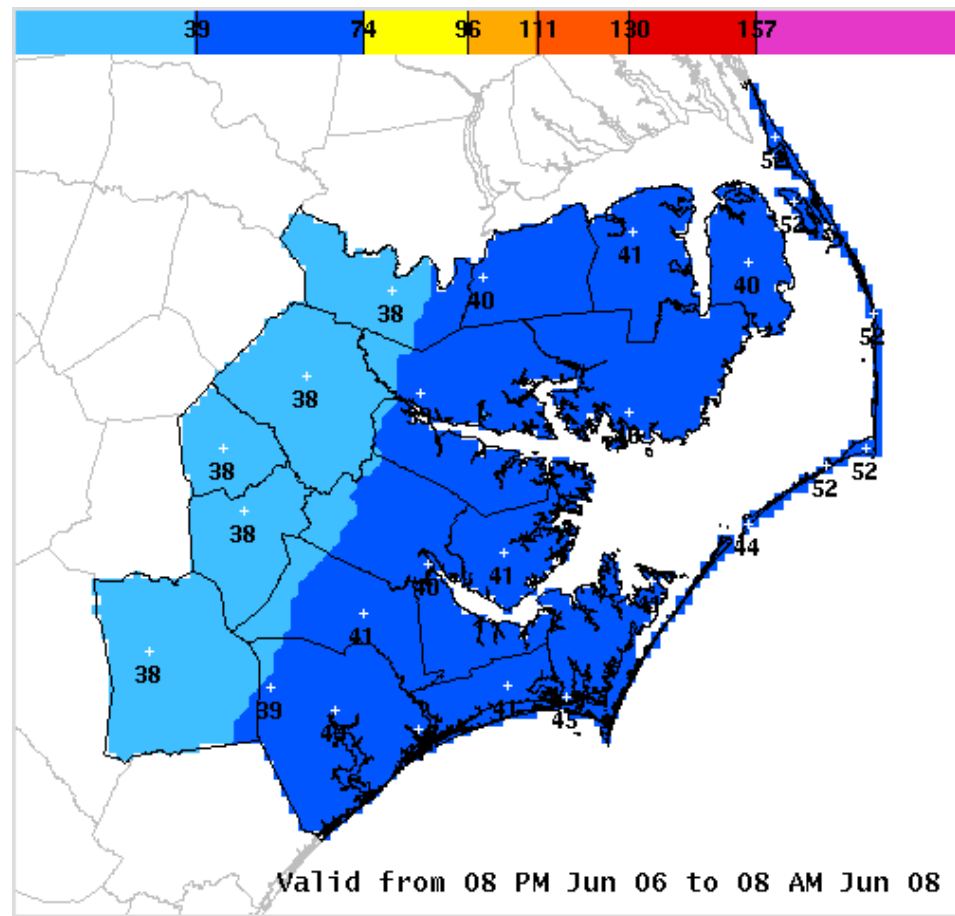
## Peak Sustained Winds



MAXIMUM SUSTAINED WIND (MPH)



## Peak Wind Gusts



MAXIMUM WIND GUST (MPH)

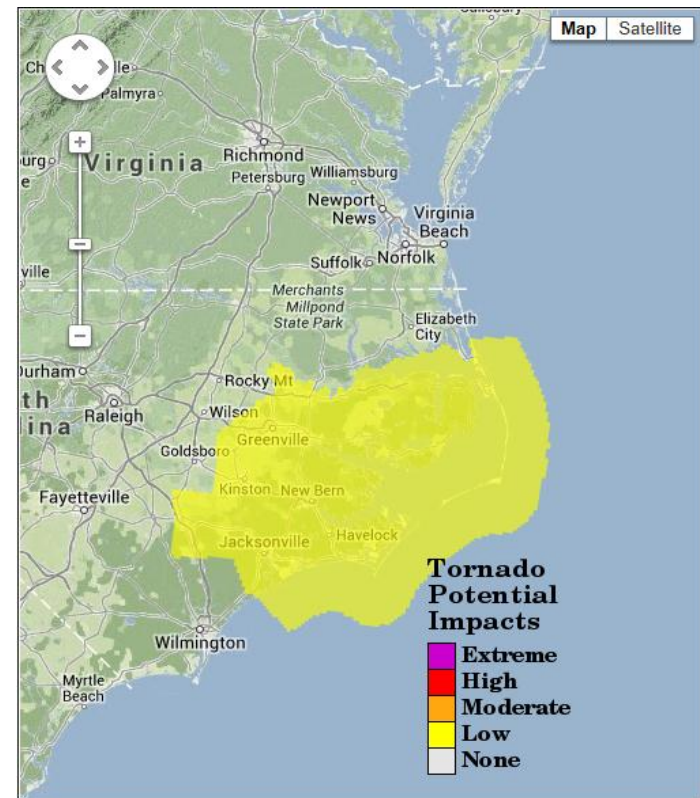
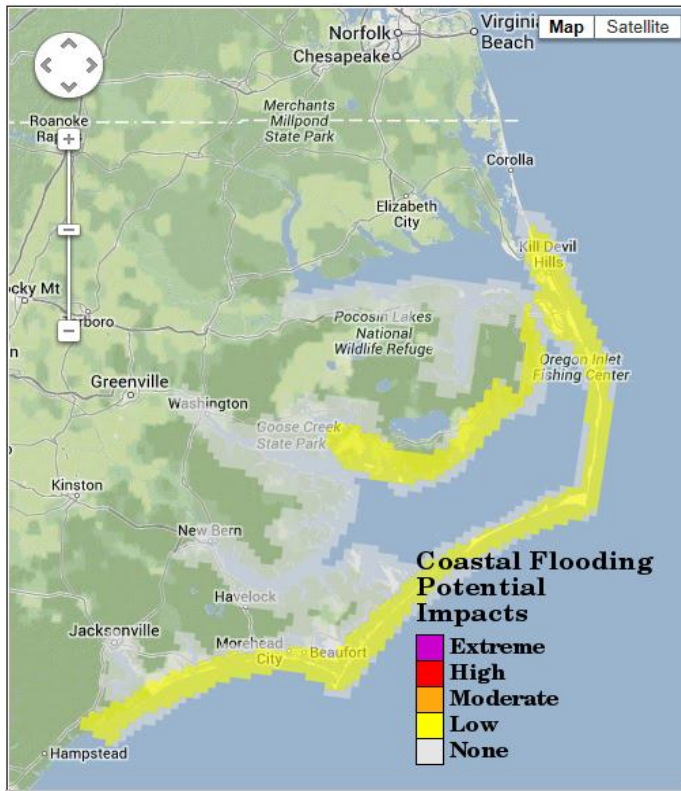


# Tropical Cyclone Potential Impacts

## TROPICAL STORM ANDREA

**Potential for Low but Concerning Impact:** Preparations should be made for the threat of minor to locally moderate coastal flood damage from sea and sound water. If realized, expect partial inundation within the flood zone, especially for low-lying areas. Moderate to locally major beach erosion. Very heavy surf breaching dunes in isolated locations, mainly in historically vulnerable spots. Descriptions are consistent with damage caused by coastal flooding of 1 to 3 feet in depth (above ground level) in hardest hit places.

**Potential for Low but Concerning Impact:** Preparations should be made for the threat of minor to locally moderate tornado and/or waterspout damage. If realized, expect isolated to widely scattered locations to experience tornadoes and waterspouts. Descriptions are consistent with an event where multiple tornadoes and waterspouts are less likely to occur.



[http://w1.weather.gov/tcig/php/tcig\\_index.php?sid=mhx&threat=coastal](http://w1.weather.gov/tcig/php/tcig_index.php?sid=mhx&threat=coastal)

[http://w1.weather.gov/tcig/php/tcig\\_index.php?sid=mhx&threat=tornado](http://w1.weather.gov/tcig/php/tcig_index.php?sid=mhx&threat=tornado)

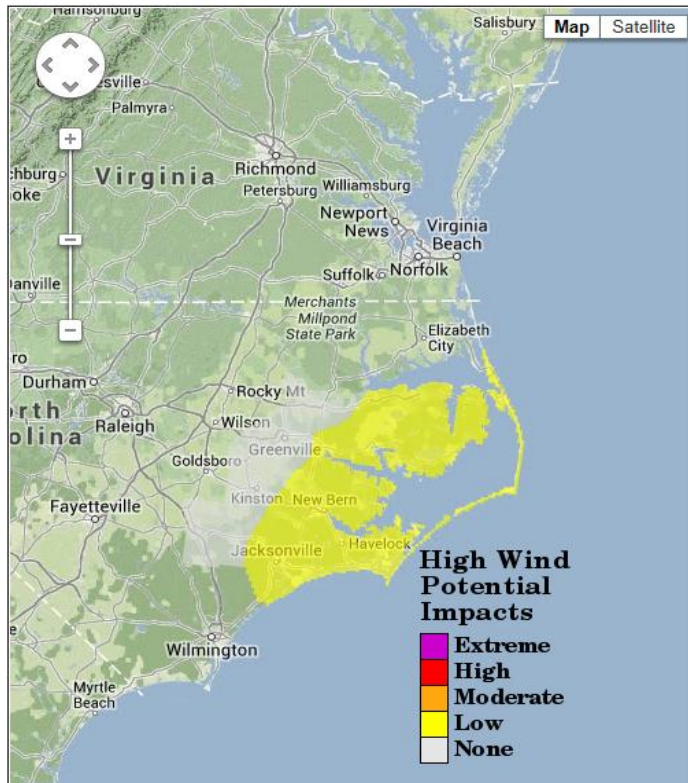


# Tropical Cyclone Potential Impacts

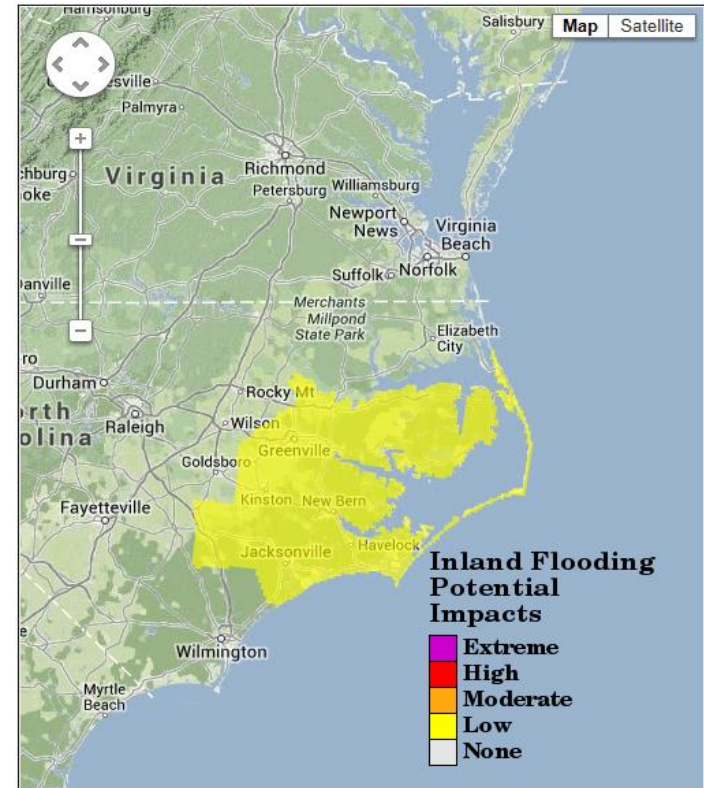
## TROPICAL STORM ANDREA

Potential for Low but Concerning Impact: Preparations should be made for the threat of minor to locally moderate wind damage. If realized, expect damage to unanchored mobile homes, porches, carports, and awnings along with some damage to shingles and siding. Large branches broken off trees, but several shallow-rooted and diseased trees blown down. Unsecured light-weight objects easily blown about and become dangerous projectiles. Dangerous driving conditions on bridges and other elevated roadways, especially for high profile vehicles. A few roads impassable due to large debris. Scattered power outages, especially in areas with above ground lines. Descriptions are consistent with damage caused by tropical storm force winds (e.g., sustained winds 39 to 73 mph) in hardest hit places.

Potential for Low but Concerning Impact: Preparations should be made for the threat of minor inland flood damage from heavy rain. If realized, expect several inland locations to experience minor fresh water flooding with highest flood waters capable of causing small streams, creeks, canals, and ditches to become swollen and overflow in a few places. Quick ponding of water occurs at underpasses, low-lying spots, and poor drainage areas. Storm drains and retention ponds become near-full and begin to overflow in a few places. Flood waters may prompt a few brief road closures.



[http://w1.weather.gov/tcig/php/tcig\\_index.php?sid=mhx&threat=wind](http://w1.weather.gov/tcig/php/tcig_index.php?sid=mhx&threat=wind)



[http://w1.weather.gov/tcig/php/tcig\\_index.php?sid=mhx&threat=inland](http://w1.weather.gov/tcig/php/tcig_index.php?sid=mhx&threat=inland)

For updates call the forecaster on Duty  
(252) 223-5122 x5

References: NWS Newport/Morehead City  
<http://www.erh.noaa.gov/mhx/>

Rainfall Forecasts (QPF)  
<http://www.hpc.ncep.noaa.gov/qpf/qpf2.shtml>

National Hurricane Center  
<http://www.nhc.noaa.gov/>

Storm Prediction Center  
<http://www.spc.noaa.gov/>